

# Océ CS2044 & CS2024

## System data



## Océ CS2044 & CS2024

*All the colours of success*

	<b>Océ CS2044 printer</b>	<b>Océ CS2024 printer</b>
<i>Technology</i>	Thermal inkjet	Thermal inkjet
<i>Print head</i>	Integrated 6 colours (cyan, magenta, yellow, black, photo cyan, photo magenta) 7680 nozzles (1280 nozzles per colour) Semi permanent	Integrated 6 colours (cyan, magenta, yellow, black, photo cyan, photo magenta) 7680 nozzles (1280 nozzles per colour) Semi permanent
<i>Resolution</i>	Max. 2400x1200 dpi	Max. 2400x1200 dpi
<i>Ink</i>	Océ large colour gamut dye ink	Océ large colour gamut dye ink
<i>Size of ink tanks</i>	330 ml per colour	130 ml
<i>Ink level monitoring</i>	Ink level indication Out of ink notice	Ink level indication Out of ink notice
<i>Colour modes</i>	Colour, B&W/Grey scale	Colour, B&W/Grey scale
<i>Quality modes</i>	Draft, standard, high, highest	Draft, standard, high, highest
<i>Printing speed</i>	Max. 2.2 min/A0	Max. 1.3 min/A1
<i>Stand</i>	Included	Included
<i>Standard interface</i>	Network board (10BaseT/100BaseTX) USB 2.0	Network board (10BaseT/100BaseTX) USB 2.0
<i>Standard accessory</i>	1 printhead 6 ink tanks (cyan, magenta, yellow, black, photo cyan, photo magenta) 1 roll holder 2 inch	1 printhead 6 ink tanks (cyan, magenta, yellow, black, photo cyan, photo magenta) 1 roll holder 2 inch



# Océ CS2044 & CS2024 System data

## Standard accessory

1 cutter  
 1 maintenance cartridge  
 Power cable  
 1 roll instant dry photo paper (use printing preference Smart Dry Photo gloss)

1 cutter  
 1 maintenance cartridge  
 Power cable  
 1 roll instant dry photo paper (use printing preference Smart Dry Photo gloss)

## Options

Media take up unit  
 Additional 2 inch roll holder

Additional 2 inch roll holder



## Media

### Media sources

1 roll, front loading  
 Cut sheet, front loading

1 roll, back loading  
 Cut sheet, front loading

### Media core size

2 inch

2 inch

### Media thickness

0.07-0.8 mm

0.07-0.8 mm

### Media types

Uncoated  
 Coated  
 Transparent paper  
 Polyester film  
 Glossy photo paper  
 Satin photo paper

Uncoated  
 Coated  
 Transparent paper  
 Polyester film  
 Glossy photo paper  
 Satin photo paper

### Media sizes roll

	max	min
width	1117,6 mm	297 mm
length	15240 mm	210 mm

	max	min
width	609,6 mm	254 mm
length	15200 mm	203 mm

### Media sizes cut sheet

	max	min
width	1117,6 mm	210 mm
length	1600 mm	210 mm

	max	min
width	609,6 mm	203 mm
length	1400 mm	203 mm

### Width detection

Automatic

Automatic

### Roll length detection

Remaining amount detection

Remaining amount detection

### Drawing margin roll

Leading & trailing: 5 mm  
 Left & right side: 5 mm

Leading & trailing: 5 mm  
 Left & right side: 5 mm

### Drawing margin cut sheet

Leading: 5 mm  
 Trailing: 23 mm  
 Left & right side: 5 mm

Leading: 5 mm  
 Trailing: 23 mm  
 Left & right side: 5 mm

# Océ CS2044 & CS2024 System data

## Borderless printing

For roll media: photo paper  
 Margin leading & trailing: 0 mm  
 Margin left & right side: 0 mm  
 Supported width: 10", 14", 16", 24", 36", 42"  
 ISO A2/A1/A0, JIS B3/B2/B0

For roll media: photo paper  
 Margin leading & trailing: 0 mm  
 Margin left & right side: 0 mm  
 Supported width 10", 14", 16", 24"  
 ISO A2/A1, JIS B3/B2

## Maximum roll length

120 m if outer roll diameter <150 mm

120 m if outer roll diameter <150 mm

## Supported media formats

ISO, DIN, ANSI, ARCH, JIS  
 POSTER: 20"x30", 30"x40", 42"x60", 44"x62"  
 PHOTO: 8"x10", 10"x12", 10"x15", 14"x17"  
 16"x20"(US), 18"x22", 20"x24"

ISO, DIN, ANSI, ARCH, JIS  
 POSTER: 20"x30"  
 PHOTO: 8"x10", 10"x12", 10"x15", 14"x17"  
 16"x20"(US), 18"x22", 20"x24"



## Environment

### Dimensions

Printer including stand:  
 1642 (W) x 972 (D) x 1075 (H) mm (without packaging)

Printer engine: 1200 (W) x 596 (D) x 484 (H) mm  
 Stand: 1200 (W) x 752 (D) x 645 (H) mm  
 (without packaging)

### Weight

Printer engine and roll holder: 80 kg (without  
 printhead, ink tanks and packaging)  
 Stand: 18 kg

Printer engine and roll holder: 40 kg (without  
 printhead, ink tanks and packaging)  
 Stand: 9 kg

### Electrical requirements

AC 100- 240V (50/60 Hz)

AC 100- 240V (50/60 Hz)

### Power consumption

Operation: 160 W or less  
 Sleep mode: 100-115V: 6W or less  
 Sleep mode: 220-240V: 9W or less

Operation: 160 W or less  
 Sleep mode: 100-115V: 6W or less  
 Sleep mode 220-240V: 9W or less

### Noise

Standby: 35 dB or less  
 Operation: 58 dB or less

Standby: 35 dB or less  
 Operation: 54 dB or less

### Safety approvals

UL, CE, TUV, CB certification  
 FCC, IC, VCCI, c-tick

UL, CE, TUV, CB certification  
 FCC, IC, VCCI, c-tick

### Others

Energy Star, ROHS, WEEE

Energy Star, ROHS, WEEE

# Océ CS2044 & CS2024 System data

## Driver and RIPs

*Driver*  
*Automated printing process*

Windows 2000, Windows XP, Windows Server 2003

Océ printing preferences (predefined settings):

- predefined media settings
- predefined print mode settings
- predefined colour settings
- automatic loading of Océ media profile

*Back channel communication via the driver & Internet browser*

- View job status
- View queue
- View ink level
- View waste ink level
- View media type

*Optional RIPs*

Onyx CADPro

Onyx GraphicsPro

Windows 2000, Windows XP, Windows Server 2003

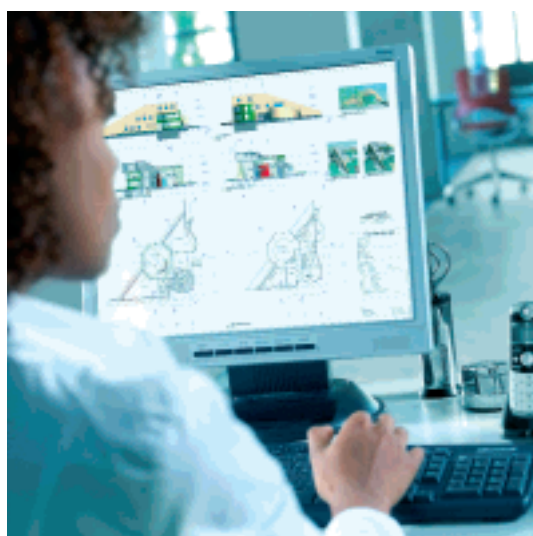
Océ printing preferences (predefined settings):

- predefined media settings
- predefined print mode settings
- predefined colour settings
- automatic loading of Océ media profile

- View job status
- View queue
- View ink level
- View waste ink level
- View media type

Onyx CADPro

Onyx GraphicsPro



### Onyx CADPro

*Adds the ability to output HPGL, HPGL2 and HPRTL drawings directly on the printer*

HPGL2 , HPGL, HPRTL

TIFF/TIFF-IT/8&16 Bit TIFF/JPEG2000/JPEG

Native Photoshop/Kodak PhotoCD/ER Mapper

MrSID/Targa/Scitex CT/DIB/GIF/PCX/BMP

yes:

- Quick start installation guide
- Shortcut to Hot Folders created automatically on

### Onyx GraphicsPro

*Adds the ability to output PostScript and raster files directly on the printer. And includes PostScript driver for printing from Windows or MAC OS applications*

HPGL2 , HPGL, HPRTL

TIFF/TIFF-IT/8&16 Bit TIFF/JPEG2000/JPEG

Native Photoshop/Kodak PhotoCD/ER Mapper

MrSID/Targa/Scitex CT/DIB/GIF/PCX/BMP

PS & EPS level 2&3/PDF/DCS 4 and 6-colour separations

Adobe PS 2&3 for applications under Windows 2000/XP/2003 Server

Adobe PS 2&3 for applications under Mac OS

PostScript 1 & 4, True Type, Multiple Master Type 1, CID, Kanji, Morisawa

yes:

- Quick start installation guide
- Shortcut to Hot Folders created automatically on

*Supported vector files*

*Supported raster files*

*Supported PostScript files*

*Drivers Windows*

*Drivers Mac OS*

*Supported font types in PostScript*

*Easy installation*



# Océ CS2044 & CS2024 System data

	1 desktop	1 desktop
	■ Create automatically 6 quick sets	■ Create automatically 6 quick sets ■ Virtual PostScript printer installed automatically
<i>Clear intuitive user interface</i>	yes, no training needed	yes, no training needed
<i>Automated printing process</i>	yes:	yes:
	■ Quick sets: predefined print settings	■ Quick sets: predefined print settings
	■ Hot Folders: files dropped in the Hot Folders will be converted and processed automatically	■ Hot Folders: files dropped in the Hot Folders will be converted and processed automatically
<i>Automated printing process via remote workstations</i>	yes, via shortcut to Hot Folders	yes, via shortcut to Hot Folders
<i>Manually open files when needed</i>	yes	yes
<i>Edit line thickness and colour for each HPGL pen</i>	yes	yes
<i>Customize HPGL/HPGL2 settings</i>	yes	yes
<i>Print directly from PC and MAC creative application</i>	yes, via Hot Folders	yes, via Hot Folders and PostScript driver
<i>Autoscale and autorotate images</i>	yes	yes
<i>Print queue for print jobs</i>	yes	yes
<i>Save and archive jobs</i>	yes	yes
<i>Print from history queue</i>	yes	yes
<i>Change job settings of history</i>		magnification
<i>Automatic media save/nesting</i>	yes	yes
<i>Image interpolation</i>	yes	yes
<i>Job log and media usage reporting</i>	yes	yes
<i>Active printers</i>	standard 2, up to 5 CS2044 & 2024	standard 2, up to 5 CS2044 & 2024
<i>Thumbnail job preview</i>	yes	yes
<i>Spot colour matching</i>		yes
<i>Pantone colour library</i>		yes
<i>ICC compliant</i>	yes	yes
<i>Océ media profile</i>	yes, 27	yes, 27
<i>Upgrade path</i>	■ Basic printer to CADPro ■ CADPro to GraphicsPro	■ Basic printer to GraphicsPro

## Minimum system requirements

<i>Operating systems</i>	Windows XP Pro with latest service pack	Windows XP Pro with latest service pack
<i>CPU</i>	Intel Pentium III	Intel Pentium III
	Athalon, 1.5 Ghz or higher	Athalon, 1.5 Ghz or higher
<i>Storage</i>	40 Gb hard drive	40 Gb hard drive
	1 Gb RAM	1 Gb RAM
<i>Video Display</i>	1280x1024 16-bit colour	1280x1024 16-bit colour
<i>USB</i>	One port required for Security Key	One port required for Security Key
<i>DVD-ROM</i>	Required	Required



**Printing for Professionals**

For information and services, visit us at [www.oce.com](http://www.oce.com)

5 / 5

© 2006 Océ. Illustrations and specifications do not necessarily apply to products and services offered in each local market.

Technical specifications are subject to change without prior notice. Océ is a registered trademark of Océ-Technologies B.V. All other trademarks are the property of their respective owners.